



ODASA
Cost &
Economics

3rd Annual ACEIT User Conference
28 January 2009

Using the ACE-to-ACE Plug-in to
Add a Brigade Combat Team (BCT) Estimate View to an Future
Combat Systems (FCS) Platform Based Estimate View

John D. Bryant
Office of the Deputy Assistant Secretary of the Army
For Cost & Economics

John.Bryant@hqda.army.mil

(703) 601-4177

DSN 329-4177



Agenda

ODASA
Cost &
Economics

- Purpose
- G-8 vs. DASA-CE Costing
- Commodity Group ACEIT Files
- System of Systems ACEIT File With a BCT View
- ACE-to-ACE Discussion
- ACE-to-ACE Demo
- Summary



Purpose

ODASA
Cost &
Economics

- To Explain How to Use the ACE-to-ACE Plug-in Using the Future Combat System Estimate as an Example. Scenario was that G8 (Army Affordability Function) Wanted an Independent Comparison of Their Estimate to That of DASA-CE.



G8 vs DASA-CE Costing



- G8
 - Spreadsheet Based Using Just a Few Tabs in an Excel File
 - Unit Cost * Quantity
 - No Detail Behind the Unit Cost
 - Costing of a BCT Organization and Total FCS
 - Simple Quantity Drills
- DASA-CE (Sep 08)
 - Several Commodity Group (CG) ACEIT Files
 - Existing System of System (SoS) File Only Estimated Costs Above the CG File
 - Relied on the ACE Executive & Excel to Produce Total FCS Cost
 - No Provision for Costing by BCT

WBS/CES Description
FCS BCT (FBCT) - Core
MGV - Manned Ground Vehicles
NLOS-C, Spl
ICV
MCS
NLOS-C
NLOS-M
C2V
RSV
RMV
MV-E
MV-T
Un-Manned Ground Vehicles
ARV-L (Mule-Assault)
MULE-Countermine
MULE-Transport
SUGV
UAV - Un-Manned Aerial Vehicles
UAV - Class I
UAV - Class IV



Commodity Group (CG) ACEIT Files



- Structured by Acquisition Costing Directorate Organization
 - Weapon Systems Division
 - Manned Ground Combat Vehicles (MGVs) – 9 Platforms
 - Unmanned Ground Vehicles (UGVs) – 4 Platforms
 - Unmanned Aerial Vehicles (UAVs) – 2 Platforms
 - Non-Line-of-Site Launch System (NLOS-LS) – 1 Platform
 - Networks, Information Software & Electronics costing Division (NISEC) Teams
 - Software – Network and Platform Development & Support
 - Networks & Electronics Team – Communications, Computers, Sensors, etc. (C4ISR) – All Platforms represented

- Some CG File Attributes
 - Produced by Subject Matter Experts
 - Very detailed
 - Large ACEIT files
 - Sensitive to Phasing and Learning
 - Cost by CG Total and Platforms Within The CG
 - Summary Section with Platform Unit Cost Calculations



Army Cost Element Structure



- Appropriation-based, time-phased
- Produces Detailed Estimates Typically for a Single Item
- Shown Below,
 - 1.0 – Research, Development, Test & Evaluation (RDT&E)
 - 2.0 – Procurement

	WBS/CES Description
108	Total MGCV Family (x.xx level)
109	Total MGCV
110	1.0 - RDT&E Funded Elements
111	1.01 - Development Engineering
112	1.02 - Production Engineering & Planning (PEP)
113	1.03 - Development Tooling
114	1.04 - Prototype Manufacturing
115	1.05 - Systems Engineering / Program Management
116	1.06 - System Test and Evaluation
117	1.07 - Training
118	1.08 - Data
119	1.09 - Support Equipment
120	1.10 - Development Facilities
121	1.11 - Other RDT&E

WBS/CES Description
2.0 - Procurement Funded Elements
2.01 - Non-Recurring Production
2.02 - Recurring Production
2.03 - Engineering Changes
2.04 - Systems Engineering / Program Management
2.05 - System Test & Evaluation
2.06 - Training & Devices
2.07 - Data
2.08 - Support Equipment
2.09 - Operational / Site Activation
2.10 - Fielding
2.11 - Training Ammunition / Missiles
2.12 - War Reserve Ammunition / Missiles
2.13 - Modifications
2.14 - Other Procurement



Average Procurement Unit Cost (APUC)



- Each CG file has Summary Sections Containing APUC Calculations
- Army CESs 2.01 – 2.10 & 2.14 (Other)
- Phased APUC Calculation
 - Learning effect
 - Doesn't Mask Large Variations by Year
 - Requires Production Quantities to Calculate
 - Allocated to platform by year
- Non-allocated to Platform, Phase by Year,
 - Actually Allocated to platform, but
 - Requires No Production Quantities to Calculate

409	APUC - Phased			
410	ICV - Infantry Carrier Vehicle	APUC_ICV_2\$	If(Prod_Q_ICV > 0, SumIf(ProcurementCost_ByVariant, Platform_ID, @MGV_Tot_\$/Prod_Q_ICV_0))	F
411	MV-T - Medical Vehicle - Treatment	APUC_MEV_T_2\$	If(Prod_Q_MEV_T > 0, SumIf(ProcurementCost_ByVariant, Platform_ID, @MGV_Tot_\$/Prod_Q_MEV_T_0))	F
412	MV-E - Medical Vehicle - Evacuation	APUC_MEV_E_2\$	If(Prod_Q_MEV_E > 0, SumIf(ProcurementCost_ByVariant, Platform_ID, @MGV_Tot_\$/Prod_Q_MEV_E_0))	F
413	MCS - Mounted Combat System	APUC_MCS_2\$	If(Prod_Q_MCS > 0, SumIf(ProcurementCost_ByVariant, Platform_ID, @MGV_Tot_\$/Prod_Q_MCS_0))	F

421	APUC - Phased, non-Allocated			
422	ICV - Infantry Carrier Vehicle	Proc_Non_allocated_ICV_2\$	If(Prod_Q_ICV = 0, SumIf(ProcurementCost_ByVariant, Platform_ID, @MGV_Tot_\$))	F
423	MV-T - Medical Vehicle - Treatment	Proc_Non_allocated_MEV_T_2\$	If(Prod_Q_MEV_T = 0, SumIf(ProcurementCost_ByVariant, Platform_ID, @MGV_Tot_\$))	F
424	MV-E - Medical Vehicle - Evacuation	Proc_Non_allocated_MEV_E_2\$	If(Prod_Q_MEV_E = 0, SumIf(ProcurementCost_ByVariant, Platform_ID, @MGV_Tot_\$))	F



SoS ACEIT File with BCT View



- Goal: Add Costing of an Organization
- Show Break-Out by Commodity Group and Specific Platforms
- BCTs per Year w/Excel Quantity Spreadsheet Copy/Paste
- Use ACE-to-ACE Plug-in to Transfer Phased Unit Costing from CG Files to SoS
- Total FCS Cost in One ACEIT file
- Sensitive to Quantity Drills

WBS/CES Description	Equation / Throughput	Phasing
FCS BCT (FBCT) - Core		
MGV - Manned Ground Vehicles		
NLOS-C, Spl	Prod_Q_FBCT_MGV_NLOS_C_Spl * APUC_MGV_NLOS_C_Spl_2\$	F
ICV	Prod_Q_FBCT_MGV_ICV *	F
MCS	Prod_Q_FBCT_MGV_MCS *	F
NLOS-C	Prod_Q_FBCT_MGV_NLOS_C *	F
NLOS-M	Prod_Q_FBCT_MGV_NLOS_M *	F
C2V	Prod_Q_FBCT_MGV_C2V *	F
RSV	Prod_Q_FBCT_MGV_RSV *	F
RMV	Prod_Q_FBCT_MGV_RMV *	F
MV-E	Prod_Q_FBCT_MGV_MV_E *	F
MV-T	Prod_Q_FBCT_MGV_MV_T *	F
UAV - Un-Manned Aerial Vehicles		
UAV - Class I	Prod_Q_FBCT_UAV_Class_I *	F
UAV - Class IV	Prod_Q_FBCT_UAV_Class_IV *	F
Un-Manned Ground Vehicles		
ARV-L (Mule-Attack)	Prod_Q_FBCT_UGV_MULE_A *	F
MULE-Countermine	Prod_Q_FBCT_UGV_MULE_C *	F
MULE-Transport	Prod_Q_FBCT_UGV_MULE_T *	F
SUGV	Prod_Q_FBCT_UGV_SUGV *	F



ACE-to-ACE: Roadmap

ODASA
Cost &
Economics

- Excel Quantity Spreadsheet Feeds the following (Copy/Paste)
 - Commodity Group (CG) Files
 - Command, Control Communication, Intelligence, Surveillance, Reconnaissance (C4ISR)
 - Manned Ground Vehicles (MGVs)
 - Un-Manned Ground Vehicles (UGVs)
 - Un-Manned Aerial Vehicles (UAVs)
 - Non-Line-Of_Sight Launch System (NLOS-C)
 - System of Systems (SoS) File

- C4ISR File Feeds the Following Files Through the ACE-to-ACE Plug-in
 - Remaining CG Files Through the ACE-to-ACE Plug-in for Total Platform Hardware Cost.
 - SoS File for Non-Allocated C4ISR

- CG Files FeedS SoS Through the ACE-to-ACE Plug-in with
 - Phased RDTE Cost
 - Phased Platform Allocated and Non-AllocatedCosts

- The SoS File Receives Data from
 - Excel Quantity Spreadsheet
 - CG Files
 - C4ISR File
 - Software File



ACE-to-ACE: Definition



- From ACE Help
 - The Focus of This Plug-In is to Allow the User to Import and Update Three Types of Results from One Session into Another:
 - Phased Results (Cost and Non-Cost). Phased Results Will be Brought Over into the Yearly Phasing Columns
 - Total Results (Cost and Non-Cost). Total Results will be Brought Over into Dynamic Equation Columns (DEC)
 - RI\$K Results. RI\$K Distribution Results Become Custom CDFs.
- Plug-in Also Brings Over Other DECs, Such as Session Path and Case Name.



ACE-to-ACE: Add Workscreen in Destination Files



- For Any File that will Receive ACE-to-ACE Plug-in Data
- Will Add Eight Dynamic Equation Columns to the Active Workscreen.
- To Avoid Changing Your Favorite Workscreen Use Workscreen Arrange Feature to Create a New Workscreen Before Adding These DEC's
- Two of the Comment DEC's Used for Linking to New Scenarios Within the Source Files
 - ACE_SESSION (*) ACE Session Path
 - ACE_CASE_NAME (*) Source Case Name
- Example Below is the Information the SoS File gets from MGV CG File

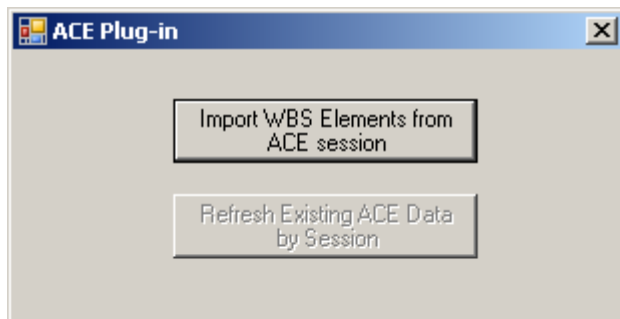
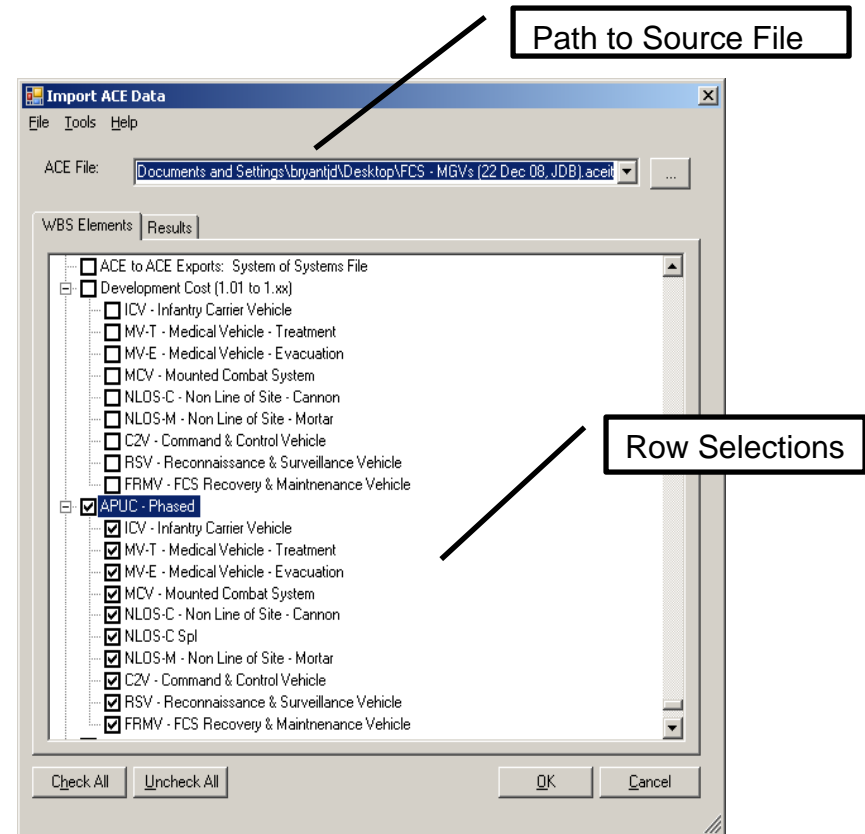
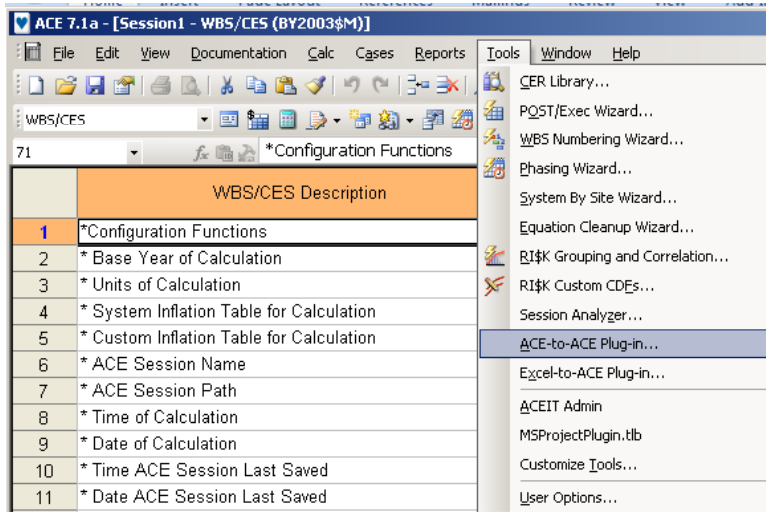
WBS/CES Description	ACE_SESSION (*) ACE Session Path	ACE_CASE_NAME (*) Source Case Name
*** C:\Documents and Settings\bryantjd\	C:\Documents and Settings\bryantjd\Desktop\FCS - MGVs (22 Dec 08, JDB).aceit	
APUC - Phased	C:\Documents and Settings\bryantjd\Desktop\FCS - MGVs (22 Dec 08, JDB).aceit	BASELINE
ICV - Infantry Carrier Vehicle	C:\Documents and Settings\bryantjd\Desktop\FCS - MGVs (22 Dec 08, JDB).aceit	BASELINE
MV-T - Medical Vehicle - Treatment	C:\Documents and Settings\bryantjd\Desktop\FCS - MGVs (22 Dec 08, JDB).aceit	BASELINE
MV-E - Medical Vehicle - Evacuation	C:\Documents and Settings\bryantjd\Desktop\FCS - MGVs (22 Dec 08, JDB).aceit	BASELINE
MCV - Mounted Combat System	C:\Documents and Settings\bryantjd\Desktop\FCS - MGVs (22 Dec 08, JDB).aceit	BASELINE
NLOS-C - Non Line of Site - Cannon	C:\Documents and Settings\bryantjd\Desktop\FCS - MGVs (22 Dec 08, JDB).aceit	BASELINE
NLOS-C Spl	C:\Documents and Settings\bryantjd\Desktop\FCS - MGVs (22 Dec 08, JDB).aceit	BASELINE
NLOS-M - Non Line of Site - Mortar	C:\Documents and Settings\bryantjd\Desktop\FCS - MGVs (22 Dec 08, JDB).aceit	BASELINE
C2V - Command & Control Vehicle	C:\Documents and Settings\bryantjd\Desktop\FCS - MGVs (22 Dec 08, JDB).aceit	BASELINE
RSV - Reconnaissance & Surveillance Vehicle	C:\Documents and Settings\bryantjd\Desktop\FCS - MGVs (22 Dec 08, JDB).aceit	BASELINE
FRMV - FCS Recovery & Maintenance	C:\Documents and Settings\bryantjd\Desktop\FCS - MGVs (22 Dec 08, JDB).aceit	BASELINE



ACE-to-ACE: Dialog Boxes



- Example Below Shows Selection of Information File Being Pulled from the MGV CG File





ACE-to-ACE: Imported Data



- Give it a Case Specific Variable Name so the Information can be Transferred to Where it is Needed in the Estimate
- Example Below is Some of the Information the MGVS CG File gets from C4ISR CG File

WBS/CES Description	Approp	Unique ID	Equation / Throughput	Phasing	Fiscal Year	Units
ACE to ACE Imports: C4ISR file						
C4ISR Cost: Baseline (Mar 06)						
MGVs						
2.0 - Procurement						
MCS	OPA	Case_Base_MCS_C4ISR_2\$	[Cost Throughput]	BY	2003	\$K
ICV	OPA	Case_Base_ICV_C4ISR_2\$	[Cost Throughput]	BY	2003	\$K
NLOS-M	OPA	Case_Base_NLOS_M_C4ISR_2\$	[Cost Throughput]	BY	2003	\$K
NLOS-C	OPA	Case_Base_NLOS_C_C4ISR_2\$	[Cost Throughput]	BY	2003	\$K
NLOS-C Special Interest	OPA	Case_Base_NLOS_C_Spl_C4ISR_2\$	[Cost Throughput]	BY	2003	\$K
C2V	OPA	Case_Base_C2V_C4ISR_2\$	[Cost Throughput]	BY	2003	\$K
RSV	OPA	Case_Base_RSV_C4ISR_2\$	[Cost Throughput]	BY	2003	\$K
MV	OPA	Case_Base_MV_C4ISR_2\$	[Cost Throughput]	BY	2003	\$K
FRMV	OPA	Case_Base_FRMV_C4ISR_2\$	[Cost Throughput]	BY	2003	\$K



Transfer Variable Section



- Can Make an Import Section to Organize the Data
- Assign “Transfer” Variables to the Imported Rows so the Data can be Used Elsewhere in the Estimate.
- Updates
 - Simple Refresh (i.e., No Record of Previous Data is Needed)
 - New Case (Record is Desired)
 - Move Transfer Variable
 - Use Case Function
- The Figure Below Shows the APUC Transfer Variables for the SoS File.

WBS/CES Description	Approp	Unique ID
APUC - Phased		
ICV - Infantry Carrier Vehicle	WTCV	APUC_MGV_ICV_2\$
MV-T - Medical Vehicle - Treatment	WTCV	APUC_MGV_MV_T_2\$
MV-E - Medical Vehicle - Evacuation	WTCV	APUC_MGV_MV_E_2\$
MCV - Mounted Combat System	WTCV	APUC_MGV_MCS_2\$
NLOS-C - Non Line of Site - Cannon	WTCV	APUC_MGV_NLOS_C_2\$
NLOS-C Spl	WTCV	APUC_MGV_NLOS_C_Spl_2\$
NLOS-M - Non Line of Site - Mortar	WTCV	APUC_MGV_NLOS_M_2\$
C2V - Command & Control Vehicle	WTCV	APUC_MGV_C2V_2\$
RSV - Reconnaissance & Surveillance	WTCV	APUC_MGV_RSV_2\$
FRMV - FCS Recovery & Maintenance	WTCV	APUC_MGV_RMV_2\$



Case Function: Definition



- From ACE Help

Purpose:

This function allows the use of selectors to pick a specific case value from a user-identified list.

Syntax:

Case (Selector, CaseValue1, ..., CaseValueN)

where $N > 1$, $1 \leq \text{Selector} \leq N$

Selector

This argument is an integer to select the case value from the list to return. The first case value in the list (CaseValue1) is returned by using a selector value of 1, and the CaseValueN is returned using a value of N for the Selector. The Selector's value must be between 1 and N inclusive. The selector argument can either be a value or a variable, but must be an integer.

CaseValue1, ..., CaseValueN

This argument is a list of values, variables, or mathematical expressions. There must be at least 2 case values to choose from and each case value must be separated by a comma



ACE-to-ACE: Import Transfer Section with Case Function



- Transfer Section
 - Moves the Information from the Import Section to Where it is Needed in the Estimate
 - Uses Case to Provide for Multiple Scenarios
- Preserves All Cases
 - One File, Rather Than Many.
 - Compare Several Scenarios Using the Inputs Results Viewer
 - Underlying Methodology Changes are Easier to Handle (i.e., Exported Items like APUC, don't change)

WBS/CES Description	Unique ID	Equation / Throughput	Phasing	Fiscal Year	Units
ACE-to-ACE: C4ISR Import Transfer section					
Which Case	WhichCase		1 C		
MGVs					
1.0 - RDTE					
MCS	MCS_C4ISR_1\$	Case (WhichCase, Case_Base_MCS_C4ISR_1\$, Case G8 POM MCS C4ISR 1\$)	F		
ICV	ICV_C4ISR_1\$	Case (WhichCase, Case_Base_ICV_C4ISR_1\$,	F		

ACE to ACE Imports: C4ISR file					
C4ISR Cost: Baseline (Mar 06)					
MGVs					
1.0 - RDTE					
MCS	Case_Base_MCS_C4ISR_1\$	[Cost Throughput]	BY	2003	\$K
ICV	Case_Base_ICV_C4ISR_1\$	[Cost Throughput]	BY	2003	\$K



ACE-to-ACE: MGV Inputs Results Viewer



- Change MGV Quantities for Drill
 - Simple Copy Paste Overrides for Now, (Will Use CASE Function in the Future)
- Change Case for Imported Data (C4ISR, in This Case)

BASELINE		WBS/CES Description	Cost Interpretation	FY 2007	FY 2008	FY 2009	FY 2010
G-8, P-Form Quantities, MGVs, v.13 (Aug 08)							
472		2.021 - Platform Production Quantities					
473		TOTAL VEHICLE PRODUCTION QUANTITIES				5.0 *	5.0 *
474		MANNED GROUND VEHICLES (MGV)				5.0 *	5.0 *
475		MCS					
476		ICV					
477		NLOS MORTAR					
478		NLOS-C					
479		NLOS-C Special Interest				5	5

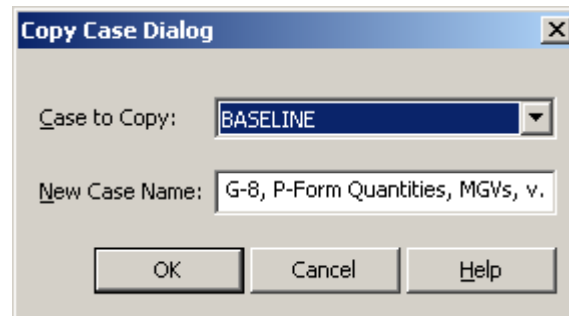
BASELINE		WBS/CES Description	Cost Interpretation	Total
G-8, P-Form Quantities, MGVs, v.13 (Aug 08) [out of]				
5415				
5416		ACE-to-ACE: C4ISR Import Transfer section		
5417				
5418		Which Case		2



ACE-to-ACE: Managing Cases in the Inputs Results Viewer

ODASA
Cost &
Economics

- Use for Both Source and Destination Files
- Create a New Case
 - Normally, Copy an Existing Case and Change the Name
 - In Example below, Case Name = G-8, P-Form Quantities, MGVs, v.13 (Aug 08)
 - Make Changes Based Upon Some Scenario





ACE-to-ACE: Managing Cases in CG & SoS Files



- For CG & SoS Destination Files
- Need to Copy/Paste New Case Name From the Inputs Results Viewer from the Source File to the ACE_CASE_NAME DEC in the Destination file
- If the Path/File Name has Changed then the ACE_SESSION DEC Must be Changed to Reflect the Change.
- Use the Procedure in the “ACE-to-ACE: Import Transfer Section with Case Function” Slide to Manage Multiple Scenarios.

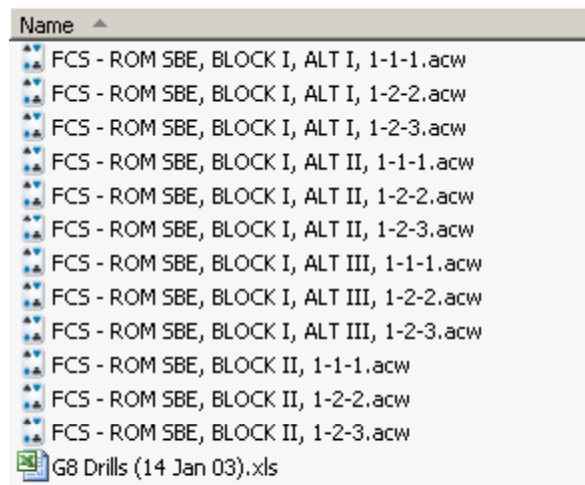
WBS/CES Description	ACE_SESSION (*) ACE Session Path	ACE_CASE_NAME (*) Source Case Name
**** C:\Documents and Settings\bryantjd\	C:\Documents and Settings\bryantjd\Desktop\FCS - MGVs (22 Dec 08, JDB).aceit	
APUC - Phased	C:\Documents and Settings\bryantjd\Desktop\FCS - MGVs (22 Dec 08, JDB).aceit	BASELINE
ICV - Infantry Carrier Vehicle	C:\Documents and Settings\bryantjd\Desktop\FCS - MGVs (22 Dec 08, JDB).aceit	BASELINE
MV-T - Medical Vehicle - Treatment	C:\Documents and Settings\bryantjd\Desktop\FCS - MGVs (22 Dec 08, JDB).aceit	BASELINE
MV-E - Medical Vehicle - Evacuation	C:\Documents and Settings\bryantjd\Desktop\FCS - MGVs (22 Dec 08, JDB).aceit	BASELINE
MCV - Mounted Combat System	C:\Documents and Settings\bryantjd\Desktop\FCS - MGVs (22 Dec 08, JDB).aceit	BASELINE
NLOS-C - Non Line of Site - Cannon	C:\Documents and Settings\bryantjd\Desktop\FCS - MGVs (22 Dec 08, JDB).aceit	BASELINE
NLOS-C Spl	C:\Documents and Settings\bryantjd\Desktop\FCS - MGVs (22 Dec 08, JDB).aceit	BASELINE
NLOS-M - Non Line of Site - Mortar	C:\Documents and Settings\bryantjd\Desktop\FCS - MGVs (22 Dec 08, JDB).aceit	BASELINE
C2V - Command & Control Vehicle	C:\Documents and Settings\bryantjd\Desktop\FCS - MGVs (22 Dec 08, JDB).aceit	BASELINE
RSV - Reconnaissance & Surveillance Vehicle	C:\Documents and Settings\bryantjd\Desktop\FCS - MGVs (22 Dec 08, JDB).aceit	BASELINE
FRMV - FCS Recovery & Maintenance	C:\Documents and Settings\bryantjd\Desktop\FCS - MGVs (22 Dec 08, JDB).aceit	BASELINE



ACE-to-ACE: Advantages



- Done In-House, no Contractor Was Used This Time
- Can all be Done Within ACEIT, no Excel or ACE Executive.
- Eliminates Many Copy/Paste Errors
- The Average Drill can be Done in Less Than a Days vs. Up to Two and Half for One of the Older Methods
- The old way of 2003-2004
 - Many SoS Files to Keep Track Of, But no CG Files Yet
 - Prior to Phased Overrides & the Inputs Results Viewer.
 - Any Methodology Change had to be Duplicated in Each File.





Demo

ODASA
Cost &
Economics

- MGV File Set-Up
 - Create ACE-to-ACE Workscreen
 - Add ACE-to-ACE Export Section
 - Phased AUPC calculation
 - Non-Platform Allocated Phased Costs
 - ACE-to-ACE Import Section
 - Transfer Variables
 - Case Function
 - Add a New Case (Quantity Drill)

- Import to SoS File



Summary

ODASA
Cost &
Economics

- Set up
 - ACE-to-ACE Workscreen
 - ACE-to-ACE Export Section
 - ACE-to-ACE Import Section
- IRV
 - Add Cases
 - Case Name Management
- Update Source & Destination Files for each Case
- CG and Sos Files are Linked, but not Automated.
 - Session/Path & Case Name Need to be Current to Maintain Link
 - Import/Refresh, Calculate, Save for Information to be Current
- Saves Time When You Need It the Most