



ACEIT Technical Support
aceit_support@tecolote.com
 (805) 964-6963 ext. 211

ACEIT Support Australia
aceit_support_au@tecolote.com
 61 7 5575 9877

ACEIT Sales
aceit_sales@tecolote.com
 (281) 333-0240 ext. 225

ACEIT Training
aceit_train@tecolote.com
 (281) 333-0240 ext. 227

ACEIT Development
 5266 Hollister Ave., Suite 301
 Santa Barbara, CA 93111-2089
 (805) 964-6963

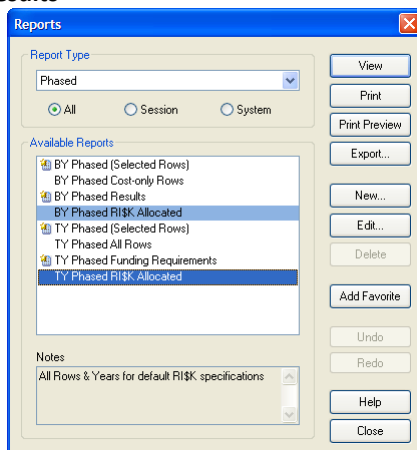
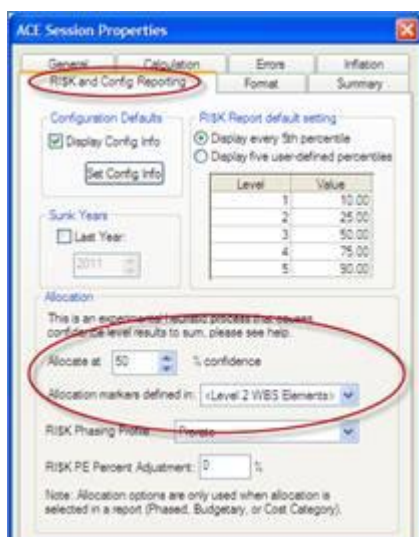
ACEIT Website
www.aceit.com

Tip of the Month – Getting RISK Results to Match

Do you ever find that your RISK results between ACE and POST don't match? Or that the results in the Allocated Time-Phased report don't match the RISK Chart? This is usually because you have inadvertently created different reports, not because ACE or POST has reported incorrect results! Here are some tips for creating allocated reports that can help you out.


Generating Time-Phased Allocated RISK Results

In ACE, RISK-allocated results are generated by modifying a Phased report. ACE contains risk-allocated time-phased reports that can be run using the session defaults or modified to display the desired confidence level.



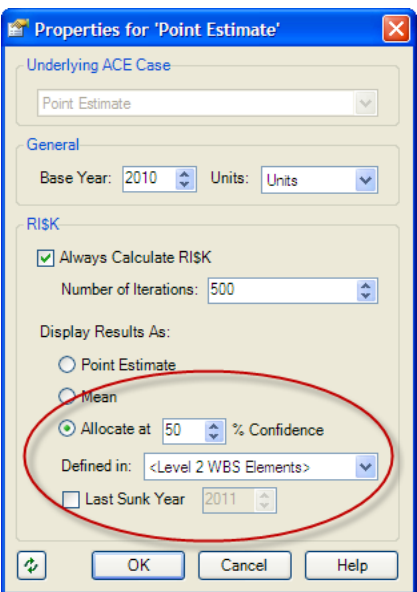
Calculation defaults are specified in the Session Properties dialog.

In POST, there are two ways to create a RISK-allocated time-phased report:

1. Create a time-phased report and change the case properties () of the desired what-if case to show allocated results.
2. Create a new what-if case in the IRV whose case properties have been set to show allocated RISK results; then create a time-phased report of that new case.

Generating a RISK Chart in POST

In POST, you can create a RISK Chart based on Allocated or Statistical results, by selecting the desired type on the Options tab of the RISK Chart dialog. If you want the costs plotted on the RISK Chart to match the allocated phased results, you must select Allocated.



Course Highlights

ACEIT 201 - Next Steps in ACE, CO\$TAT, and POST (4 days)
 16-19 August * Washington, DC

Learn the next level of capabilities in ACEIT.

- Utilize newer features and functions to create logical links within the ACE cost model to maximize what-if capabilities.
- Master CO\$TAT by normalizing, analyzing and performing regression analysis on data with the ultimate goal of enhancing the ACE estimate.
- See techniques and methods to work with summary sections and sunk costs.
- Link data from Excel and other ACE sessions into your current estimate.
- Use ACE and POST to present the results of your ACE estimate: create charts, reports, run what-if excursions, export to PowerPoint presentations.

Register today!

ACEIT Training Schedule

Save the date * September 2012 * 6th Annual ACEIT User Workshop

	Aug	Sep	Oct	Nov
ACEIT 101: Introduction to ACE, CO\$TAT and POST	2-5 WDC	20-23 WDC		1-4 WDC
ACEIT 101a: Refresher - Reviewing and Updating ACE Models		15-16 WDC		29-2 Boston, MA
ACEIT 201: Next Steps in ACE, CO\$TAT, and POST	16-19 WDC		18-21 WDC	
Training Bundle - 4 Day [ACEIT 101a/RISK 102]			4-7 Boston, MA	

On-Site and Mechanics Training are available, contact ACEIT Training for more information.

ACEIT Certification/Compliance Documentation

To view the documents, visit the Compliance Documentation page on aceit.com.

ACEIT Version Compatibility

ACEIT is designed to run a Microsoft Windows operating system. Some ACEIT applications, such as CO\$TAT and POST, require Microsoft Office to run. Please see the table below for version compatibility:

ACEIT Version (release date)	Windows OS Version	Microsoft Office Version
7.3 (April 2011)	XP, Vista, Windows 7 (32 or 64-bit)	2003, 2007 2010 (32-bit only)
7.2a-003 (July 2010)	XP, Vista, Windows 7 (32 or 64-bit)	2003, 2007 2010 (32-bit only)
7.2a (April 2010)	XP, Vista	2003, 2007
7.2-001 (Jan 2010)	XP, Vista	2003, 2007
7.2 (Dec 2009)	XP, Vista	2003, 2007
7.1a (July 2008)	2000, XP, Vista	2000, 2003, 2007
7.1 (Dec 2007)	2000, XP	2000, 2003

View your ACEIT version and release date selecting Help>About in any ACEIT application.

