



ACEIT E-News: Custom Report Templates

Overview

Issue 25 – April 2007

The April ACEIT E-News focuses on more new features in 7.0 that you may not be aware of. This month we will be highlighting [Exporting and Importing Custom Report Templates](#). Want to take the 7.0 Basic course to learn about all the new features added in the latest version? Take a look at the latest [training calendar](#) and see what training is right for you. Two new [Support Alerts](#) were posted; read the alerts regarding ACE calculation and POST RI\$K charts All in this month's E-News!

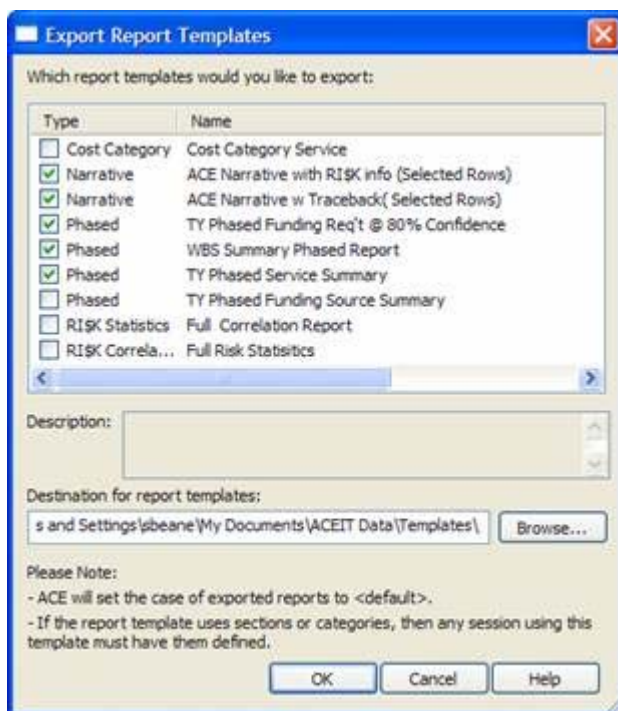
Mark your calendars! 2nd Annual ACEIT User Conference, 14-16 January 2008.
(dates have changed)

ACEIT Highlight: Exporting and Importing Custom Report Templates

Once you have taken the time to set up a report exactly as you want it, you may want to use it in other sessions. This is especially true of the Narrative report, since it has so many options that you can customize.

Export Report Templates:

To export a report template so that you can either use it with another session or send it to someone else, select **Reports > Export Report Templates**. You will be shown a list of all customized reports in the session (system reports that are delivered with ACE will not be in the list):



Check the report templates that you would like to export. By default, these report templates will be saved in \My Documents\ACEIT Data\Templates.

Import Report Templates:

Report templates can be imported into another session on your computer or given to another user to import into a session. To give a report template to another user, simply send them the report template file, e.g., "ACE Narrative w Traceback (Selected Rows).report" and instruct them to put the file in their \My Documents\ACEIT Data\Templates folder. When they go into ACE and select the **Reports > Import Report Templates** option, the report will be listed. After they have imported the report template it will be listed as an available report to generate.

Training Schedule

Upcoming ACEIT Training

June 2007 – September 2007 classes are listed below. For a complete listing of all upcoming training and course descriptions, check the [ACEIT training schedule](#).

	Jun	Jul	Aug	Sep
Automated Reports and Presentations Using Excel with POST (POST)	21-22 WDC			13-14 LA
Basic ACEIT 7.0 (Basic ACEIT)	4-7 Las Vegas, NV	10-13 WDC	7-10 LA	18-21 WDC
Basic RI\$K Analysis in ACE	19-20 WDC			11-12 LA
Training Bundle - 4 Day (Basic RI\$K/POST)	19-22 WDC			11-14 LA
Training Bundle - 4 Day (In Depth ACE/ POST)		16-19 Las Vegas, NV		

On-Site and **Mechanics Training** are available; contact our [Training Coordinator](#) for more information.

Support Alerts on ACEIT.com

There have been **2 New Support Alerts** posted since the last e-news. Below is a summary of the Support Alerts.

ACEIT 7.0/7.0a – (Critical): ACE crashes when calculating

Application: ACE 7.0/7.0a

Problem: ACE sometimes crashes when calculating.

If you have the option checked to "Add unknown variables to the end of the session" and your maximum rows setting is too small, this problem can occur. When ACE attempts to calculate, and there are not enough rows for ACE to add the unknown variables to the bottom of the session, ACE will crash.

Also, if you use Edit > Replace in the Equation/Throughput column causing the equation length to exceed 250 characters, ACE will crash on calculate.

Action: Increase the Maximum Rows under File > Properties. Use caution when using Edit > Replace in the equation column. These problems will be fixed in the next version of ACE.

ACEIT 7.0a - (Critical): POST Then Year Allocated Risk Chart is plotting the point estimate value in base year dollars, rather than then year

Application: POST 7.0a

Problem: POST Then Year Allocated Risk Chart is plotting the point estimate value in base year dollars.

When generating a POST Risk Chart, and selecting the Options Then Year (TY) and Allocated, the chart and data table should display the TY point estimate value; however it shows the Base Year (BY) point estimate value. The confidence level values, e.g., 50% and 80% are correctly shown in TY dollars.

Workaround: Please generate a Time Phased report in TY dollars. Copy the value from the Total column for the selected Risk Chart row. Paste the value into the data table beneath the risk chart for the Point Estimate Cost (column E). The chart will be updated automatically.

Please see the [Support Alert page](#) of the ACEIT website for more information on recent alerts and to view other Warnings and Informational postings. You will need to login and have current DMS. Please contact Aceit_Support@tecolote.com if you have any questions.

ACEIT Support:	aceit_support@tecolote.com	(805) 964-6964 ext. 211
ACEIT Sales:	aceit_sales@tecolote.com	(805) 964-6964 ext. 151
ACEIT Training:	aceit_train@tecolote.com	(805) 964-6964 ext. 118



You are receiving this e-mail because you have attended ACEIT training or are a current ACEIT user. If you wish to unsubscribe to our e-mail notifications, reply to this e-mail with REMOVE as the subject.
Copyright © 2007 Tecolote Research, Inc.

