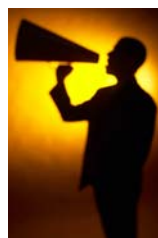


The September ACEIT E-News takes a look at a few new features available in ACEIT 7.0. Find out how to [convert your 6.1 POST files to 7.0](#). Also, learn how to [plot multiple S-curves](#) on one chart. If you are interested in [presenting a paper at the ACEIT User Conference](#) you still have time to submit one. Check out the [training schedule](#) to see when the ACEIT User Conference as well as other training courses will be held. Don't miss the new [Support Alert](#) that was posted updating the Known Issues that were issued with ACEIT 7.0 release. All in this month's e-news.

Reminder: ACEIT User Conference Call for Papers

IT'S NOT TOO LATE! If you are still interested in submitting a paper to present at the upcoming 2007 ACEIT User Conference, the **deadline for submitting papers is 01 November 2006**. We would like to invite you to submit papers and/or presentations that relate to ACEIT "best practices". Additional information and submission form for the 'call for papers' available on the ACEIT User Conference website.



For complete details about the 'Call for Papers' and to register for the User Conference visit the [ACEIT User Conference website](#).

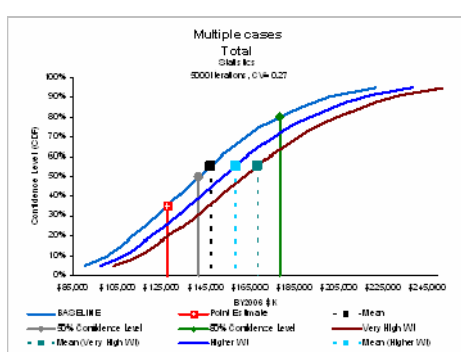
Tip of the Month

Converting 6.1 POST Files to 7.0

Have you been wondering how you're going to get your POST 6.1 files into the new 7.0 file format? While converting POST files to 7.0 isn't quite as simple as converting ACE sessions, the process is still relatively straight-forward. Detailed step-by-step instructions can be found in the POST help file (topic title: "How to convert POST 6.1 files to 7.0") and are summarized here. The most important step is to convert the POST file before converting the ACE session. Converting is a two-step process. First, convert the POST cache file by opening POST 7.0 and the corresponding workbook of reports (if available). Open the ACE 6.1 session that is linked to the cache file by clicking on POST > Open Session. This will convert your 6.1 ACE session to 7.0. Make sure to save the new converted ACE session. Second, edit the session links in the reports. Do this from the Manage Worksheets dialog (POST > Manage > Worksheets) by selecting Edit Session Links.

ACEIT Highlight: Multiple Risk S-Curves

The POST RI\$K charts are created from ACE risk results. The charts are also called S-curve charts because of their shape. The ability to plot multiple S-curves on one chart is new in version 7.0. You can select a reference case and then one or more comparison cases to plot. The ability to create Then Year (TY) and Same Year (SY) dollar risk results is also new in version 7.0. There are two calculation options available for the chart, Statistical or Allocated. Allocated results are adjusted to cause confidence levels to "sum". For details on the simple heuristic employed in ACE to accomplish this, see the associated Help topic.



New Multi-Case Risk S-Curve Chart

Training Highlight

Last Chance for Basic ACEIT 6.1 Training

With the release of ACEIT 7.0 we will phase-out training of ACEIT 6.1 in all our courses.. The first course to be phased out will be Basic ACEIT 6.1. If your organization is not upgrading to ACEIT 7.0 right away and you need Basic training, take advantage of what may be the last scheduled Basic 6.1 class. You can register for the November 6.1a class to be held in Las Vegas, NV online in the [training section](#). If you need 6.1a training after November, please contact us and we can arrange it.

Training Schedule

Upcoming ACEIT Training

October 2006 – January 2007 classes are listed below. For a complete listing of all upcoming training, check the [ACEIT training schedule](#).

	Oct	Nov	Dec	Jan
				23-25 SB, CA
Advanced ACEIT (In Depth ACEIT/POST)				16-19 WDC
Automated Reports and Presentations Using Excel (POST)	25-26 Las Vegas, NV			18-19 WDC
Basic ACEIT 6.1 (Basic ACEIT)		13-16 Las Vegas, NV		
Basic ACEIT 7.0 (Basic ACEIT)	16-19 Las Vegas, NV		5-8 WDC	
Risk Analysis in ACE (RI\$K)	23-24 Las Vegas, NV			

On-Site and Mechanics Training are available; contact our [Training Coordinator](#) for more information.

Support Alerts on ACEIT.com

 There has been **1 New Warning Support Alert** posted since the last e-news. Below is a summary of this Support Alert.

ACEIT 7.0 New Known Issues (Warning):

The following known issues have arisen since the [ACEIT 7.0 Known Issues document](#) was distributed.

22 Sep 2006 (ACE): If you are ONLY adding or editing definitions in your session, ACE won't prompt you to save the session when exiting. Make sure you save the session before exiting ACE.

22 Sep 2006 (ACE): Pasting definitions that are wider than the margins of the built-in editor appear to be cut off and can't be viewed. Please use Microsoft Word as your editor when viewing these definitions.

22 Sep 2006 (ACE): DEC column data may not save back to version 6.1 properly. You may have to manually rearrange the data into the proper columns.

25 Sep 2006 (ACE): AutoRecover does not automatically save your session to the proper directory after it is recovered. After a session is auto-recovered, you must select File>Save As to save the session to the desired directory.

Please see the [Support Alert page](#) of the ACEIT website for more information on recent alerts and to view other Warnings and Informational postings. You will need to login and have current DMS.

ACEIT Support:	aceit_support@tecolote.com	(805) 964-6964 ext. 211
ACEIT Sales:	aceit_sales@tecolote.com	(805) 964-6964 ext. 151
ACEIT Training:	aceit_train@tecolote.com	(805) 964-6964 ext. 118



You are receiving this e-mail because you have attended ACEIT training or are a current ACEIT user. If you wish to unsubscribe to our e-mail notifications, reply to this e-mail with REMOVE as the subject.
Copyright © 2006 Tecolote Research, Inc.

