



**ACEIT Technical Support**

[aceit\\_support@tecolote.com](mailto:aceit_support@tecolote.com)  
(805) 964-6963 ext. 211

**ACEIT Support Australia**

[aceit\\_support\\_au@tecolote.com](mailto:aceit_support_au@tecolote.com)  
61 7 5575 9877

**ACEIT Sales**

[aceit\\_sales@tecolote.com](mailto:aceit_sales@tecolote.com)  
(281) 333-0240 ext. 225

**ACEIT Training**

[aceit\\_train@tecolote.com](mailto:aceit_train@tecolote.com)  
(281) 333-0240 ext. 227

**ACEIT Development**

5266 Hollister Ave., Suite 301  
Santa Barbara, CA 93111-2089  
(805) 964-6963

**ACEIT Website**

[www.aceit.com](http://www.aceit.com)

**Download Available – Enhanced System by Site Wizard**

Does your estimate include calculating the cost for purchase/deployment of equipment to multiple sites/systems over multiple years? The System by Site Wizard helps you quickly build logic into your ACE session to estimate these costs, and has been enhanced to allow **Import of data tables from Excel**.

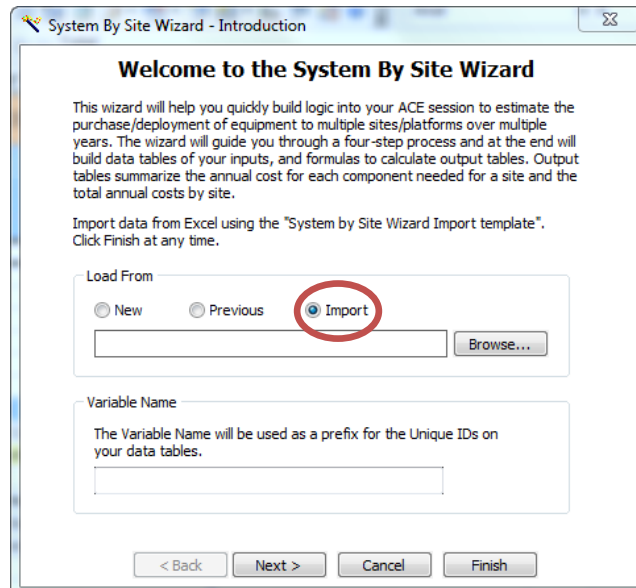
The updated System by Site Wizard, along with Excel template and example file are now available on ACEIT.com. The Excel template contains two worksheets, one for your Site/Platform schedule by FY and another for component price and configuration information. In addition, you can import other information describing the components such as Model, Service, and risk parameters. The cell notes on row 1 of each sheet describe the information valid for each column.

**Excel template:**

	A	B	C	D	E
1	Site/Platform Description	FY 2013	FY	FY	FY
2	Aircraft 1	1	2	2	2
3	Aircraft 2		3	3	3
4	Aircraft 3	2	2	2	2
5					

	A	B	C	D	E	R	S	T
1	Component Description	Approp	Price	Price Base	Price	Site 1	Site 2	Site 3
2	Black Box 1	RDTEA	100	2007	\$K	1	1	1
3	Black Box 2	APA	150	2007	\$K	2	3	2
4	Black Box 3	APA	75	2007	\$K		3	2
5	Black Box 4	RDTEA	50	2007	\$K	1	1	
6								

**New Import option:**



To download the enhanced System by Site Wizard, please go to [ACEIT.com](http://ACEIT.com)>Support>Downloads>Software Patches and click on [System by Site Wizard Hotfix 7.3a-002](#). Please email [ACEIT Support](#) if you have any questions!

### [New Instructional Videos Online](#)

We are pleased to announce that two new videos are available for viewing at ACEIT.com.

#### [Getting Started with JACS](#)

This tutorial focuses on the basic steps necessary to support an integrated cost/schedule uncertainty analysis using JACS. JACS, the Joint Analysis of Cost and Schedule, was introduced with ACEIT 7.3a. JACS is a Microsoft Project add-in that simplifies the process of creating a cost-loaded schedule. JACS also provides the tools to systematically apply uncertainty to cost and schedule and model the impact of risk events. JACS produces extensive charts that present a concise, clear and meaningful analysis of an integrated cost/schedule uncertainty model, including assessing Joint Confidence Level (JCL) between cost and schedule.

\*\*\* [Watch a video on how to get started using JACS!](#) \*\*\*

#### [Creating Custom Inflation Indices](#)

This tutorial shows how to create a custom inflation table and how to access this table from ACE. ACEIT comes with system indices, released by the Office of the Secretary of Defense (OSD), and annual updates are provided on ACEIT.com. Sometimes analysts have access to program or contractor specific historical rates they wish to use instead of these system rates. The ACEIT Librarian allows you to create custom inflation tables for use in an ACE estimate.

\*\*\* [Watch a video on how to Create Custom Inflation Indices!](#) \*\*\*

*(NOTE: you will have to login to the ACEIT website to view this Advanced Instructional video)*

### [ACEIT Training Schedule](#)

	Mar	Apr	May	Jun
<u><a href="#">ACEIT 101: Introduction to ACE, CO\$TAT and POST</a></u>		<u><a href="#">16-19 WDC</a></u>		<u><a href="#">4-7 WDC</a></u>
<u><a href="#">ACEIT 201: Next Steps in ACE, CO\$TAT, and POST</a></u>	<u><a href="#">19-22 WDC</a></u>			
<u><a href="#">Joint Analysis of Cost Schedule - (JACS)</a></u>			<u><a href="#">23-24 WDC</a></u>	
<u><a href="#">RISK 102: Introduction to Cost Risk Analysis and ACEIT RISK</a></u>			<u><a href="#">21-22 WDC</a></u>	
<u><a href="#">Training Bundle - 4 Day (RISK 102/JACS)</a></u>			<u><a href="#">21-24 WDC</a></u>	

On-Site and Mechanics Training are available, contact [ACEIT Training](#) for more information.

### [ACEIT Certification/Compliance Documentation](#)

To view the documents, visit the [Compliance Documentation page](#) on aceit.com.

### [ACEIT Version Compatibility](#)

ACEIT is designed to run in a Microsoft Windows operating system. Some ACEIT applications, such as CO\$TAT and POST, require Microsoft Office to run. Please see the table below for version compatibility:

ACEIT Version (release date)	Windows OS Version	Microsoft Office Version
<b>7.3a (March 2012)</b>	XP, Vista, Windows 7 (32 or 64-bit)	2003, 2007, 2010 (32-bit only)
<b>7.3 (April 2011)</b>	XP, Vista, Windows 7 (32 or 64-bit)	2003, 2007, 2010 (32-bit only)
<b>7.2a-003 (July 2010)</b>	XP, Vista, Windows 7 (32 or 64-bit)	2003, 2007, 2010 (32-bit only)
<b>7.2a (April 2010)</b> <b>7.2 (Dec 2009)</b>	XP, Vista	2003, 2007

---

View your ACEIT version and release date by selecting Help>About in any ACEIT application.

---



You are receiving this e-mail because you have attended ACEIT training or are a current ACEIT user. If you wish to unsubscribe to our e-mail notifications, reply to this e-mail with REMOVE as the subject. Copyright © 2013 Tecolote Research, Inc.

