



**THE
JOINT INTEGRATED ANALYSIS TOOL
(JIAT)
WHERE GOOD ANALYSIS STARTS**

**NIATIKA GRIFFIN – ODASA-CE
TOMEKA WILLIAMS – ODASA-CE
MELISSA CYRULIK – TECOLOTE RESEARCH INC.
6TH ANNUAL ACEIT USER WORKSHOP
SEPTEMBER, 2012**

**ODASA
Cost &
Economics**





The JIAT Solution

The DoD Cost Estimating Challenge

- The logistics of accessing estimating resources can be a challenging task
- A cost analyst must work through several hurdles
 - Knowing that the data and models exist
 - Knowing where data and models are stored
 - Getting access to the resources
 - Understanding how to extract the data or interact with the resources
 - Reformatting the information so that it can be integrated into an estimate or analysis

The Joint Integrated Analysis Tool (JIAT) Solution

- A web-based application that provides a portal to capability, performance, and operations and support databases, CER libraries and provides links to estimating tools
- Administered by the Office of the Deputy Assistant Secretary of the Army – Cost & Economics (ODASA-CE) and Tecolote Research, Inc.
- Available to government analysts only

This presentation shows how to use JIAT to overcome the aforementioned challenges and perform your daily estimating and analysis work efficiently and from a broader variety of sources!

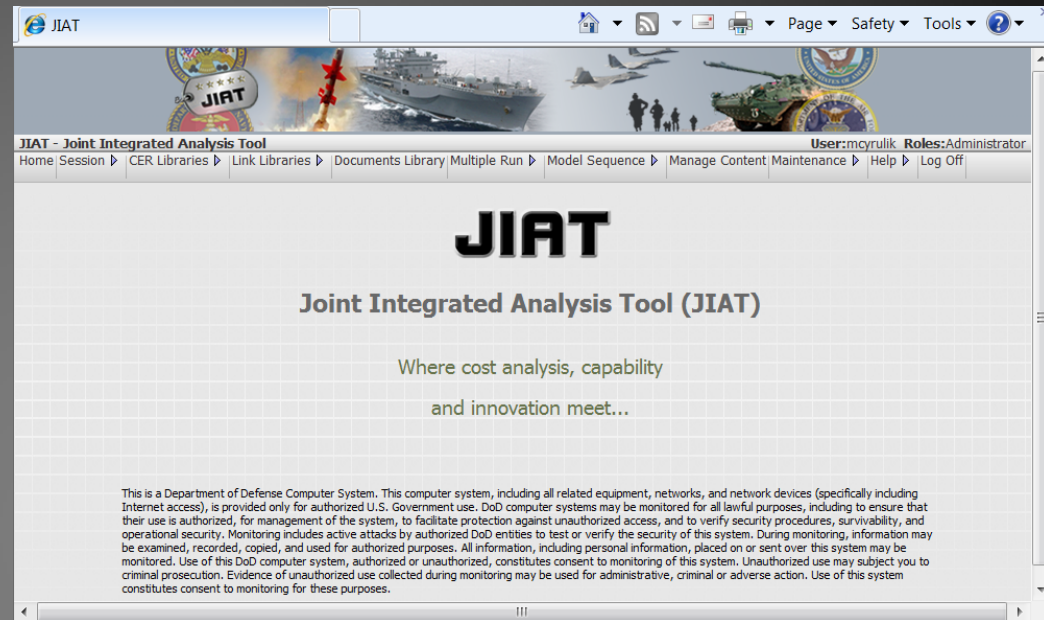


JIAT Provides Benefits to Various User Groups

- JIAT provides benefits to novice and experienced cost estimators as well as their managers
- For Novice Cost Estimators, JIAT:
 - Exposes them to unfamiliar or new data sources
 - Provides easy access to a multitude of data resources
 - Uses a single intuitive user interface for all resources allowing them to quickly become productive
- For Experienced Cost Estimators, JIAT:
 - Offers a single location to touch many resources during data collection
 - Provides a mechanism to share the results of their expertise
- For Managers, JIAT:
 - Provides a location to selectively share the organization's cost data and sources
 - Provide data and metrics on usage. Will assist decision makers with future investment decisions

JIAT Provides Access to Data

- JIAT Provides CAC log-in controlled access to various sources of estimating data
- Connect via the AWPS portal at <https://www.awps.army.mil/>
- Access to different areas is controlled by group and individual log-in privileges



Databases

- Access up to 8 databases
- Run various queries in the databases to search for cost, schedule, and technical data for use in cost analysis, cost estimating, and model development tasks

Libraries

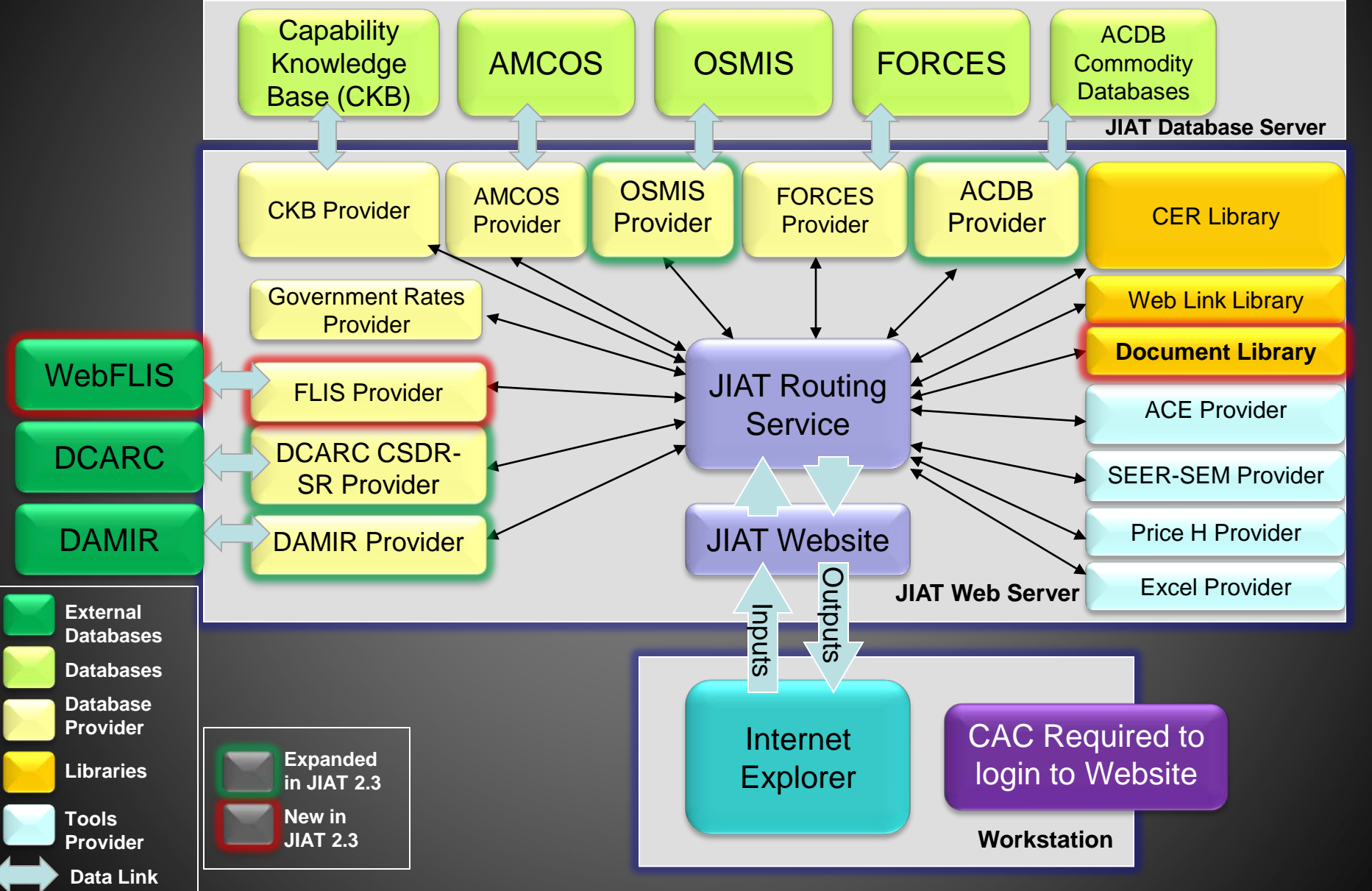
- Includes CER and Factor Libraries
- Includes Web Link Libraries that provide listings of relevant websites
- Search and retrieve CERs, factors, and websites from the libraries by keyword
- Supports hosting of organizational or group libraries

Models

- Locate and run existing cost models to generate estimates for elements of your system – e.g. software or platform models



JIAT 2.3 Components





Summary of New JIAT 2.3 Features

- Improved JIAT website interface
 - New Menu Ribbon
 - Multiple “sheets” of different models or providers can be added to a single session to more easily switch from one model to another

JIAT Session - Example Session

Save	Copy	Manage	Copy	Run Query	Costs: N/A	Session Description
Save As	New	Delete	Export to Excel		Cost Units: \$	Provider Description
	Rename	Export to COSTAT				Model Definition
Session	Sheet	Edit	Queries	Properties	Documentation	

Model (Data Query): FLIS Unit Cost and Characteristics

Description: Shows the price of a NIIN and its FLIS characteristics

Provider: FLIS Provider

Query Inputs		Query Results
Name	Value	
1	National Item Identification Number (NIIN)	Select Run Query to produce output results.

Data Query Sheet | Data Query Sheet (2) | << >>

Summary of New JIAT 2.3 Features

- New FLIS Provider
 - Query Federal Logistics Information System (FLIS) data by the National Item Identification Number (NIIN)
- Additional DAMIR Contract and Performance models
- Additional OSMIS Provider models
 - Army and CAIG CES data,
 - Consumable and Repairable Data by MDS,
 - Crew Cost and Definitions,
 - Depot
 - Fuel Usage

	Name	Inputs	Value
1	WBS*	AUTO TEMPLATE	
2	Resource*	Total	
3	Source Document*	CDSR	
4	System Type		
5	System Name		
6	Model		
7	Contract Number		
8	Task		
9	Contractor		
10	Life Cycle Phase		

*Required 7 Records Run Query Cancel

Asterisks denote required inputs. Query will not run unless these are specified.

Count of records that will be produced. This value is updated on-the-fly as the user changes input values. Clicking here displays summary of data.

New ACDB models and revision of pre-existing models

- Keyword Cost and Technical Data model that displays data by keywords such as Brakes
- Database Summary Model that shows the Database Inventory
- Revision of existing models to more closely match the functionality of the ACDB Report Wizard
- Record count on Data Query Inputs dialog
- Improved web performance speed and functionality

JIAT Database Providers

- JIAT provides access to multiple DoD databases



Retrieve Program Cost, Schedule and Technical Data

- Search and Retrieve mapped and normalized data



Understand CSDR-SR data availability

- Provides CSDR-SR Plans listed by MDAP



Collect Standard Rates

- Enlisted, Officer, Civilian, National Guard and Reserve
- 17 tables of MOS level rates provided



Obtain Force and Organizational Data

- Flying costs, Cost per mile, Facilities costs, Equip data and costs, Replenishment costs, and Mileage
- 50 tables provided



Identify Analogous Systems

- Capabilities, Programmatic, Technical, and Schedule data
- SAR Data



Military Composite Standard Pay and Reimbursement Rates

- Rates published by Office of the Under Secretary of Defense Comptroller



Gather O&S Data

- Vehicle operations Support systems, Aircraft flight, and Software Maintenance data



Gather MDAP and MAIS Data

- The authoritative source for Selected Acquisition Reports (SAR), SAR Baseline, Acquisition Program Baselines (APB) and Assessment



Query Federal Logistics Information

- Search Logistics data by NIIN

Search and Retrieve Data



Common Database Query Format Across Database Providers

- The database provider data (e.g. DAMIR and AMCOS) is brought in with a common format
- Common Format includes:
 - Sheet Header Information: displays Provider, Model and description of data
 - Query Inputs: lists all inputs to the model
 - Query Results: after query is executed displays resulting data

JIAT Data Query														
Model: Cost and Funding Summary														
Description: This model provides a summary of Cost and Funding POM and DAES/Web Services program data														
Provider: DAMIR Provider (1.0)														
Properties: TY SM														
Query Inputs				Query Results										
Name	Value	Variable	Units	Prior	FY2006	FY2007	FY2008	FY2009	FY2010	FY2011	FY2012	FY2013	To Complete	Total
Service	Army	RDTE	\$M											
Program	148 - PATRIOT PAC-3	Procurement	\$M											
Data Source	POM - 2013	POM 2012 Total	\$M											
Subprogram	MISSILE SEGMENT	Development Qty	unt											
Start Year	2006	Production Qty	unt											
End Year	2013	POM 2012 Total Qty	unt											

JIAT Data Query														
Model: AMCOS Pay Plan Model														
Description: This model produces AMCOS Lite query capability based on the selection of a Pay Plan														
Provider: AMCOS Provider (as of 9/8/2011)														
Properties: TY S														
Query Inputs				Query Results										
Name	Value	APPN	Category	Element	Then Year	E1	E2	E3	E4	E5	E6			
PayPlan	Active Enlisted	MPA	Military Compensation	Avg Cost of Base Pay (Military)	2012									
Summary	Composite Stand	MPA	Military Compensation	Avg Cost of Basic Allowance for Housing (in cash)	2012									
Group	12 : ENGINEER	MPA	Military Compensation	Avg Cost of Basic Allowance for Subsistence	2012									
SubGroup	ALL	MPA	Other Benefits	Avg Cost of Other Benefits	2012									
APPN	ALL	MPA	Permanent Change of Station Costs	Avg Permanent Change of Station-Annualized ()	2012									
Category	ALL	MPA	Retired Pay Accrual	Avg Cost of Retired Pay Accrual	2012									
Element	ALL	MPA	Separation Costs	Avg Cost of All Separation Incentives	2012									
Locality	N/A	MPA	Special Pays	Avg Cost of Special Pays	2012									
Area	N/A													



Using JIAT's CER Library

- JIAT currently hosts over 650 documented CERs and factors available for DoD users
- CER and factor sources
 - ✓ Missile Blue Books
 - ✓ Ground Vehicles Blue Book
 - ✓ Combat Vehicles
 - ✓ Manned and Unmanned Aircraft (library created by ODASA-CE analyst from several documented studies)
- Permissions are set by user group and individual user to allow access to various libraries
- Private libraries can be created for other organizations or groups
- Search across all libraries by phase, keyword, and text from a single login and simple-to-navigate user interface

Hosting a CER in JIAT

- Analysts with permission can post CERs to the JIAT website
- Load any CER and store it in a JIAT CER library for others to search

https://jiat.awps.army.mil/ - JIAT - Windows Internet Explorer

User: Roles:

Home | Session | Model Sequence | Reports CER Libraries | Link Libraries | Manage Content Maintenance | Help | Log O

Browse CER Libraries

Libraries

- ODASA-CE Aircraft and Unmann...
- ODASA-CE COMBAT VEHICLE CE...
- ODASA-CE Future Combat Syst...
- ODASA-CE Ground Vehicles Libr...
- ODASA-CE Missile Blue Book
- ODASA-CE Missiles Library
- Sample CER Library
- Training CER Library
- USASAMDC Ground Based Interce...

CERs

CER Description	Equation
Hardware Cost-Cost Factors (with PP/DT and Fire Control)	
Hardware CER/CPER	
Transmission CER/CPER	
Turret, Fire Control, and Armament Other (excludes ca...	
Engine CER/CPER	
Auxiliary Automotive CER/CPER	
Integration and Assembly CER/CPER	
Suspension CER/CPER	
Hull/Frame CER/CPER	
New Generation High Power Density Engine CER/C	
Step Functions	
Learning Slopes with Rate	
Hardw Cost to Cost Factors	

Add CER to a library

Title: Transmission CER/CPER

Equation: $\text{HP} * \text{Spd} \wedge$

Reference: UC100 Learning Slope: Fee Included: No

Cost: Slope: G&A Included: No

Theory: Rate Slope: Included: Yes

Fiscal Year: 2003 Units: \$K - Thousands

Domain Type: Cost Commodity: Wheeled and Tracked Vehicles

Phase:

- Pre-Development
- Development
- Production
- Operations and Support

Keywords:

- A to D Converter
- A-Kits
- Attitude Control Sys
- Att Detrmntn Ctrl Sys

CER Definition - Transmission CER/CPER

HARDWARE CER/CPER: Transmission

DESCRIPTION: This Hardware CER/CPER relates the cost of the individual hardware WES elements to relevant technical and performance characteristics. Transmission Cost for the 100th Unit is in \$K including overhead.

SOURCE DATA: The primary data source for this study is the Wheeled and Tracked Vehicle Data Base (WTVDB). COSTAT was used to develop the CER. The most difficult part of performing this analysis was assembling the data set. Cost, technical, and performance data was available for the 8 transmissions (transmission followed by system).

Download Upload Delete Close

Libraries listing

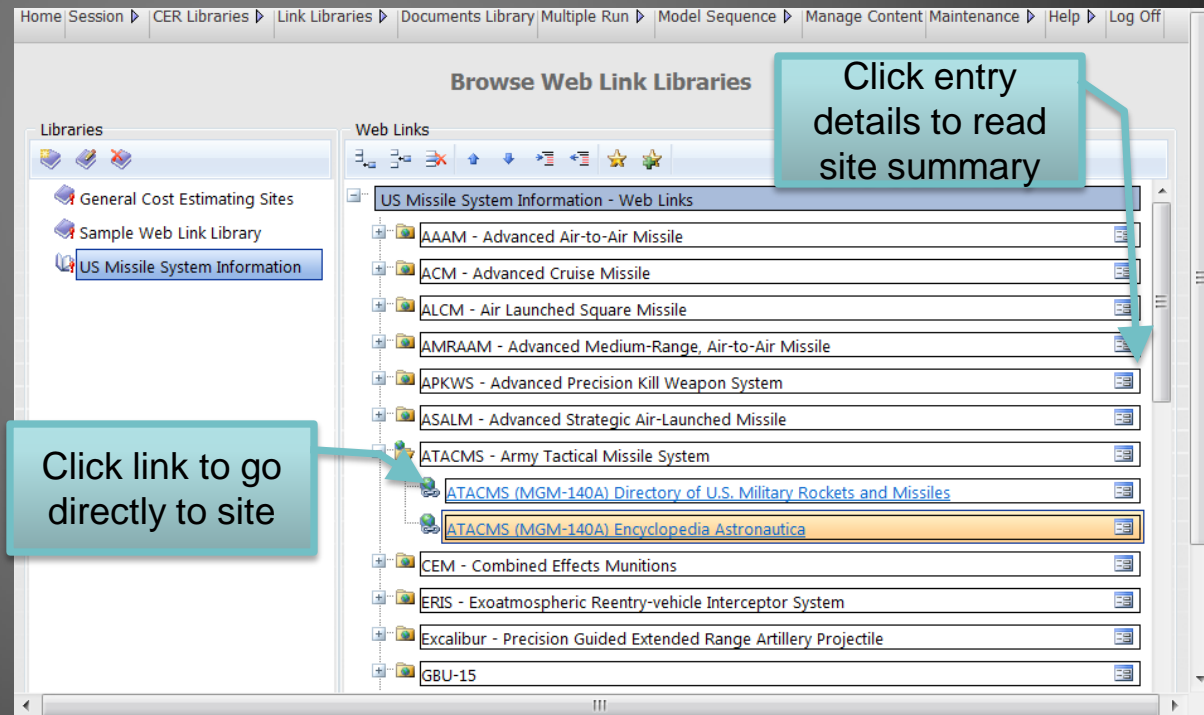
CERs listing

Includes CER definition and statistics



JIAT's Web Link Library

- JIAT can host website link libraries to assist users with finding relevant and verified information sources on the web
 - Web libraries can be browsed or searched via keywords
 - Two major libraries available plus the ability to build your own organizational library
- ✓ General Cost Estimating Sites
- Provides links to cost estimating resources
 - Grouped by functional areas: like inflation and discount rate guidance, organizational sites, and reference guide locations
- ✓ US Missile System Information
- Provides information on over 35 different missile systems
 - Search of information about missiles by: service, informational resource, common name, designator (i.e. AIM-152), missile type and general size
 - Over 185 sites provided and documented



JIAT Provides Access to Multiple Model Providers



SEER SEM

- Estimates Software Development and Maintenance
- Estimate effort, cost, schedule, staffing, reliability, and risk

PRICE H

- Estimates Hardware Acquisition and Development
- Estimates cost, resources, and schedules

Excel

- Host any Excel Model
- Specify Model Inputs and Outputs

ACEIT

- Host any ACE Session
- Specify Model Inputs and Outputs



Analyzing JIAT Data in CO\$TAT

- Several of the JIAT Data Queries can export data to a CO\$TAT dataset worksheet
- Use CO\$TAT to analyze a dataset to calculate a factor, regress a CER or develop a learning curve

Query a Database

Export to CO\$TAT

Analyze the Dataset

Develop Equations

Export the Equations to ACE

JIAT Session - Session1

Save Save As Copy Sheet Delete Rename Manage Export to Excel Export to COSTAT Copy Goto Row Run Query Base Year 2011 Cost Units: \$K Session Description Provider Description Model Definition

Model (Data Query): Cost By CES
 Description: Comparable to the ACDB Report Wizard "Select WBS Elements and Associated Resources" with 3 predetermined items: First, all CES elements must be retrieved; second, select Total System on the WBS Items form; third, resource is Total, Total Dollars (Total)
 Provider: Army Rotary Wing Aircraft (NOV 2011)

Query Inputs		Query Res				
Name	Value	Name	Task 1	Task 2	Task 3	Task 4
1 WBS	USACEAC AIRCRAFT TEMPLATE ...	System Type	ATTACK	ATTACK	ATTACK	ATTACK
2 Source Document	CDSR (1921)	System	AH-64			
3 System Type	ATTACK	Model				
4 System Name	AH-64	Contract Number				
5 Model		Task				
6 Contract Number		Contractor				
7 Task		Life Cycle Phase				
8 Contractor		Source Document				
9 Life Cycle Phase		Report By				
10		LRE Date				
11		Inflation Index				
12		Total % Spent (ACWP/LRE)				
13		System Buy Quantity				
14		System First Unit				
15						

Home Insert Page Layout Formulas Data Review View

Linear Learning Update Report Examples About
 Log Linear Beta Clear Report Help Rules of Thumb
 Non Linear Univariate Copy To Clipboard

Dataset Analysis Application

Variables	Variable ID	Task 1	Task 2	Task 3	Task 4
3					
4 System Type		ATTACK	ATTACK	ATTACK	ATTACK
5 System		AH-64			
6 Model					
7 Contract Number					
8 Task					
9 Contractor					
10 Life Cycle Phase					
11 Source Document					
12 Report By					
13 LRE Date					
14 Inflation Index					
15 Total % Spent (ACWP/LRE)					
16 System Buy Quantity					
17 System First Unit	FirstUnit				
18 System Last Unit	LastUnit				
19 Resource					
20 2.0 PRODUCTION	Production				
21 2.01 NON-RECURRING PRODUCTION					
22 2.02 RECURRING PRODUCTION					
23 2.06 TRAINING					
24 2.14 OTHER PROCUREMENT					

Learning Analysis for Dataset Sheet1, Case 1
 Wednesday, 29 August 2012, 10:30 am

I. Model Form and Equation Table

Model Form:	Unweighted Learning Curve (Unit Theory)
Number of Observations Used:	9
Equation in Unit Space:	UNIT_COST =
T:	
Quantity Slope:	
Dependent Variable:	Production
Quantity Variable:	First Unit and Last Unit Variables

II. Fit Measures (in Fit Space)

Coefficient Statistics Summary

Variable	Coefficient	Std Dev of Coef	Beta Value	T-Statistic (CoeffSD)	P-Value	Prob Not Zero
Intercept						
CUM_QTY						

Goodness-of-Fit Statistics

Std Error (SE)	R-Squared	R-Squared (Adj)	Pearson's Corr Coef

Use JIAT Data Directly in ACE Estimates

- Several of the JIAT Data Queries provide source data that can be used directly in ACE estimates. Databases like AMCOS, FORCES, and the Government Rates Provider can be queried and copied into ACE
- Incorporate CERs and Factors from the JIAT libraries into your ACE session

Database Query

Include CER in Session

JIAT Session - Session1

Save Save As Copy Sheet Delete Copy Manage Export to Excel Copy Goto Row Run Query Costs: Base Year 2013 Cost Units: \$ Session Description Provider Description Model Definition

Model (Data Query): Military Composite Rates Model
Description: This model displays Military Composite Rates by Service (as of 4/9/2012)
Provider: Government Rates Provider

Query Inputs					01 - Basic A...y (BY2012\$K)		WBS/CES Description	Approp	Unique ID	Point Estimate	Phasing Method	Equation / Throughput	Fiscal Year	Units
1	Service	Army	MPA	E-1	2	*Estimate		*Estimate						
2	Pay Grade	Enlisted;Officer	MPA	E-2	3	Total								
3			MPA	E-3	4	Manufacturing		REC_PRODS						
4			MPA	E-4	5	Air Vehicle	APF	AVS		F	AV UCS * BuyQty			
5			MPA	E-5	6	Integration	APF			F	0.15 * AVS			
6			MPA	E-6	7	SEPM	APF			F	[Rotocraft Model] * REC_PRODS			
7			MPA	E-7	8	Other	OPF			TY	[Cost Throughput]			\$K
8			MPA	E-8	9	Manpower	MPA			F	E8Rate\$(E8FTE*BuyQty)			
9			MPA	E-9	10									
10			MPA	O-1	11	*INPUT VARIABLES		*IN_VAR						
11			MPA	O-2	12	Air Vehicle First Unit Cost	APF	AV_UCS	\$ 10,221.729 *	C	(959 * TW ^ .243 + 189 * RANGE ^ .652) / 2	2000		\$K
12			MPA	O-3	13	Air Vehicle Buy Quantity		BuyQty	7 *	IS	[Input Throughput]			
					14									
					15	*Technical/Performance Characteristics								
					16	Air Vehicle Takeoff Weight (lbs)		TW	12000.00 *	C		12000		
					17	Air Vehicle Range (nmi)		RANGE	250.00 *	C		250		
					18									
					19	*Manpower Rates								
					20	E-8	MPA	E8Rate\$	*	C			2013	\$
					21									
					22	*Manpower FTEs								
					23	E-8		E8FTE	2 *	C			2	

CER Search

Search CER Libraries

Title	Equation	Library	Details
SYSTEMS ENGINEERING/MGMT	[Rotocraft Model] * REC_PRODS	Sample CER Lib	

Include Database Data in Session

Creating a JIAT Account

Visit <https://www.awps.army.mil/> to request a JIAT account

- Select New User Request and complete the form
- Once the account is approved return to the awps site and follow the portal to JIAT

Welcome to the US Army web application environment. Authorized users will have access to web based applications used to manage Maintenance, Logistics, Budgeting, and Workload and Performance for several US Army, National Guard, and Army Reserve activities.

Only UNCLASSIFIED use of this system is allowed.

QA Testing Environment

eAWPS User ID:

Password:

PKI Issuer: DOD CA-15
PKI Subject: USER.JOE.0123456789
Valid From: 4/22/2008
Valid Until: 8/19/2008 11:59:59 PM

[Forgot your password?](#)

Powered By
AKO Authentication **AKO ARMY AUTHENTICATION ONLINE**

Instructions: AKO CAC access to eAWPS is available only after you register your **AKO account** with your **eAWPS account** and your AKO account has your **CAC** registered to it. To initiate this registration please login normally then click the "Account Information" link for more instructions.

If Error Occurs: When AKO Authentication fails, you may receive a white Error page with message. If this occurs please try again later. If you are having consistent failures using this AKO CAC Login option, please contact the [eAWPS Helpdesk](#).

Access to this web environment requires that you always use the same [PKI Certificate](#) that is registered to your eAWPS account. If the above PKI Certificate is different from the one you previously registered with eAWPS please [click here for more instructions](#).

If you need assistance please contact the [eAWPS Helpdesk](#).



JIAT Usage Perspectives

User Role

• Databases

- ACDB Validated Engine Data
- OSMIS Cost Per Mile Assessment
- AMCOS Updated Labor Rates

JIAT Session - Session1

Model (Data Query): Consumable and Repairable Data by Major Command
 Description: Displays a system's consumable and repairable data by year and by Major Command
 Provider: OSMIS Provider (as of 4/1/2012)

Query Inputs				Query Results			
Name	Value	Variable Name	Units	2008	2009	2010	2011
1	Commodity Group	W : WHEELED COMBAT	Consumables	\$			
2	Mission Design Series	M1135 : STRYKER	Repairables	\$			
3	Major Command	E1 : USAREUR;FC : FORSCDM;N...	Operating Tempo	MILES			
4	Major Command List Or Sum	SUM	Density	SYSTEMS			
5	Start Year	2006	Consumables per Sys\$ per SYSTEM				
6	End Year	2011	Repairables per Sys\$ per SYSTEM				
7	CONOPS	Without CONOPS	Consumables per Unit\$ per MILE				
8			Repairables per Unit \$ per MILE				

• CER Library

- Hardware CER/CPER
- Learning Curve Slopes
- Step Functions

Browse CER Libraries

Libraries

- ODASA-CE Aircraft and Unman...
- ODASA-CE COMBAT VEHICLE ...
- ODASA-CE Future Combat Syst...
- ODASA-CE Ground Vehicles Li...
- ODASA-CE Missile Blue Book
- ODASA-CE Missiles Library
- Sample CER Library
- Training CER Library
- USASMDC Ground Based Inter...

CERs

CER Description: Equation

- ARMY CES (SURFACE VEHICLES)
 - REPL SPARES (REPARABLES)
 - PWR PKG/DRIVE TR
 - Engine
 - Transmission
 - Cost Per Unit - Combat - Drive TR
 - HULL/FRAME
 - Cost Per Unit - Combat (FRAME_1)
 - Cost Per Unit - Combat (FRAME)
 - REPL REPAIR PARTS (CONSUMABLES)



JIAT Usage Perspectives

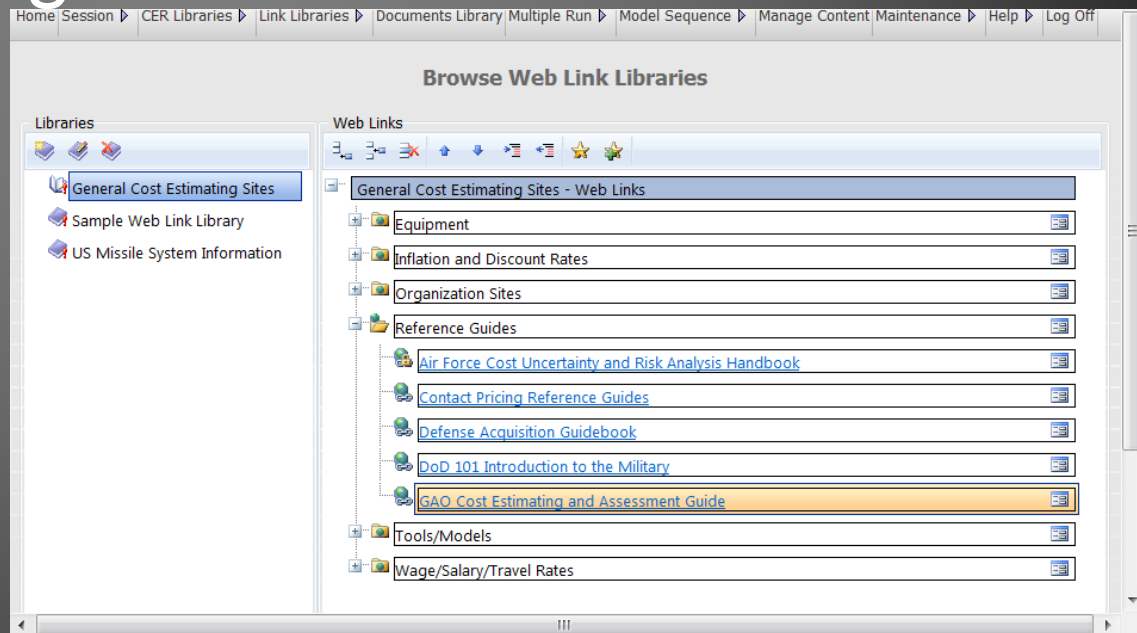
Team Leader Role

- Data Distribution

- Wheeled Track Vehicle (WTV) ACDB Lite
- Cost Estimating Relationship (CER) Library

- Knowledge Sharing

- Ability to quickly train & mentor new civilians
- Minimizes learning time thanks to common user interface





Overview of JIAT Benefits

- Web services technology provides a platform to bring multiple tools together in one workplace
- JIAT provides resources for novice and experienced cost estimators and their managers
- JIAT can easily segment user groups by service and command to promote appropriate levels for data access
- Analyses for all phases of the program – including pre-Milestone A, Alternative of Analysis, & Cost Benefit Analysis
- Enables a comprehensive LCCE which can reduce program risk by addressing cost, technical, and programmatic requirements anywhere within a program's life cycle

- JIAT provides controlled access to a wide variety of data from a single interface and login
- Access to data is controlled by user group and individual permission levels
- JIAT data can be used
 - To Support building your cost models
 - In your CO\$TAT analysis to build CERs and factors
 - To identify uncertainty distributions to enter into estimates
- Use JIAT CER Libraries
 - To expand available CERs and factors
 - To organize CERs and factors so they can be used across your organization and easily inserted into models
- Use JIAT web links
 - To help others in organization identify relevant and verified web resources
- Additionally, JIAT provides access to other model sources that can be imported into your estimates

JIAT provides the data to drive cost estimates



BACKUP



JIAT Terms

- **JIAT Website** – .mil hosted website that allows the end-user to query databases and run models
- **JIAT Provider** – Software (i.e. a web service) that hosts one or more models made available to JIAT Client applications
 - Providers typically “wrap” the functionality of an existing application (e.g., ACDB, AMCOS, OSMIS, SEER, PRICE, Excel, etc.) to process database/model run requests by the end-user
- **JIAT Model** – Named element available from a JIAT Provider that accepts a set of input values and produces a set of output values
- **JIAT Server** – Central switchboard for communicating between a JIAT client application and the JIAT Providers
 - All model run requests are routed here first and then passed on to the appropriate Provider for execution
 - Once registered with the JIAT server, a Provider and its models become available from the JIAT website



General Database Query Operation

1. Select a Database Provider

3. Enter Query Inputs

Create a New Session

Please select a provider to search and enter any relevant search criteria.

Providers to be Searched

- ACDB Demo Provider
- ACE Model Provider For Training
- ACE Provider
- AMCOS Provider
- Army ACE Provider
- Army Rotary Wing Aircraft
- CER Runner Provider
- CKB Provider
- DAMIR Provider
- DCARC CSDR-SR Provider

Search By

Model Name:

Model Description:

Phase:

Subject:

Commodity:

Domain Type:

Previous Next

Home Session > Model Sequence > Reports: CER Libraries

Data Query Model Runner - ACDB

Name: Cost By WBS

Description: Comparable to the ACDB Report Wizard "Select Entire WBS and One Resource"

Properties: BY 2011 \$K

Session Edit Run Documentation

Data Query Inputs

	Name	Value
1	WBS Type	Standard WBS
2	WBS	USACEAC AIRCRAFT TEMPLATE (MIL-STD-88
3	System Type	CARGO
4	System Name	CH-46;CH-47
5	Model	
6	Contract Number	
7	Task	
8	Contractor	
9	Life Cycle Phase	
10	Source Document	CDSR (1921)

Run Query Cancel

2. Select a Provider Model

4. View Query Results

Create a New Session

Please select a model and click Next.

Model Name	Provider
Cost By CES	Army Rotary Wing Aircraft
Cost By WBS	Army Rotary Wing Aircraft
Single Data Point Picker	Army Rotary Wing Aircraft
Task Aggregator	Army Rotary Wing Aircraft
Technical Data by WBS	Army Rotary Wing Aircraft

Previous Finish

Data Query Model Runner - ACDB

Name: Cost By WBS Provider: Army Rotary Wing Aircraft (NOV 2011)

Description: Comparable to the ACDB Report Wizard "Select Entire WBS and One Resource"

Properties: BY 2011 \$K

Session Edit Run Documentation

Query Inputs

	Name	Value	Name	Task 1	Task 2	Task 3	Task 4
1	WBS Type	Standard WBS	System Type	CARGO	CARGO	CARGO	CARGO
2	WBS	USACEAC AIRCRAFT T...	System	CH-46	CH-46	CH-46	CH-47
3	System Type	CARGO	Model	CH-46D/F	CH-46F	CH-46F	CH-47C
4	System Name	CH-46 CH-47	Contract Number				
5	Model		Task	CH-46D/F LOT 1	AIR CH-46F LOT 1	AIR VCH-46F LOT 2	AIR VCH-47C AIR VEHICLE
6	Contract Number		Contractor				
7	Task		Life Cycle Phase	FRP	FRP	FRP	FRP
8	Contractor		Source Document	CDSR (1921)	CDSR (1921)	CDSR (1921)	CDSR (1921)
9	Life Cycle Phase		Report By	Prime/Associate	Prime/Associate	Prime/Associate	Prime/Associate
10	Source Document	CDSR (1921)	LRE Date				
11			Inflation Index	05/13/2011	05/13/2011	05/13/2011	05/13/2011
12			Total % Spent (ACWI)				
13			System Buy Quantity				
14			System First Unit				
15			System Last Unit				



Working with JIAT Hosted CERs

- Search for a CER in the JIAT CER libraries

Use the CER Model Runner Provider

Search By

Model Name:

Model Description:

Phase: Production

Subject: Transmission

Commodity:

Domain Type:

Providers to be searched:

- ACDB Demo Provider
- ACE Model Provider For Training
- ACE Provider
- AMCOS Provider
- Army ACE Provider
- CER Runner Provider
- CKB Provider
- DAMIR Provider
- DCARC CSDR-SR Provider
- Excel Provider
- Excel Provider for Training
- FORCES Provider
- Military Composite Rates Provider

Cancel Next >

Search by your criteria

Select from available CER list

Model Name	Provider Name
Transmission CER/CPER (ODASA-CE Ground Vehicles Lib...	CER Runner Provider

View CER Documentation

Cancel < Previous Finish

- Load and calculate CERs in Excel with your input variables

JIAT Non-Time Phased

Model: Transmission CER/CPER

Description: $\$ * HP * Spd ^$

Provider: CER Runner Provider (1.0)

Properties: BY 2003 \$K

Shows CER

Create multiple cases

Variable Name	Appropriation Model Unit	Convert From	Baseline	More Power	Less Power
OUTPUT VARIABLES					
Transmission CER/CPER Output	RDTEF				
INPUT VARIABLES					
HP			500	600	450
Spd			40	45	35

View CER results

Enter inputs

Running Models in JIAT

- Common Model Runner
- Enter new case inputs and calculate results in various models from various tools

JIAT Non-Time Phased

Model: COCOMO II
 Description: COCOMO Example
 Provider: Excel Provider (2.1.5)
 Properties: BY 2010 \$

COCOMO II in Excel

Variable Name	Appropriation	Model Unit	Convert From	Baseline
OUTPUT VARIABLES				
New SLOC				
New Equiv SLOC				
Adapted SLOC				
Modified Equiv SLOC				
Total Build Equiv SLOC				
Estimated Effort (MM)		mo		
Estimated Cost (\$)	RDTEA			
Estimated Duration (mo)		mo		
INPUT VARIABLES				
Total SLOC				
Existing SLOC				
Touchable SLOC				
New SLOC				
Breakage				
Precedentedness				
Development Flexibility				
Architecture/Risk Resolution				
Team Cohesion				

JIAT Non-Time Phased

Model: Missile
 Description: Air to Ground
 Provider: PRICE H Provider (1.0)
 Properties: BY 1998 \$

Missile Model in Price H

Variable Name	Appropriation	Model Unit	Convert From	Baseline	Missile Block II
OUTPUT VARIABLES					
Missile: Total Production Cost	OPA				
INPUT VARIABLES					
Missile:Guidance Control/Navigation & Electronics:Guidance: Manufacturing					
Missile:Guidance Control/Navigation & Electronics:Control: Manufacturing C					
Missile:Guidance Control/Navigation & Electronics:Nav.: Manufacturing Com					
Missile:Guidance Control/Navigation & Electronics:Core Processor: Manufac					
Missile:Seeker:Target Detection: Manufacturing Complexity of Electronics					
Missile:Seeker:Gimbal: Manufacturing Complexity of Electronics					
Missile:Warhead and Fuse:Safe/Arm/Fuse: Manufacturing Complexity of Ele					
Missile:Airframe and Motor:Forward: Manufacturing Complexity of Structure					
Missile:Airframe and Motor:Center: Manufacturing Complexity of Structure					
Missile:Airframe and Motor:Aft: Manufacturing Complexity of Structure					
Missile:Airframe and Motor:Motor: Manufacturing Complexity of Structure					
Missile:Airframe and Motor:Airframe and Moter I&T: Manufacturing Comple					
Missile:Guidance Control/Navigation & Electronics:Guidance: Manufacturing					
Missile:Guidance Control/Navigation & Electronics:Control: Manufacturing C					
Missile:Guidance Control/Navigation & Electronics:Nav.: Manufacturing Com					
Missile:Guidance Control/Navigation & Electronics:Core Processor: Manufac					